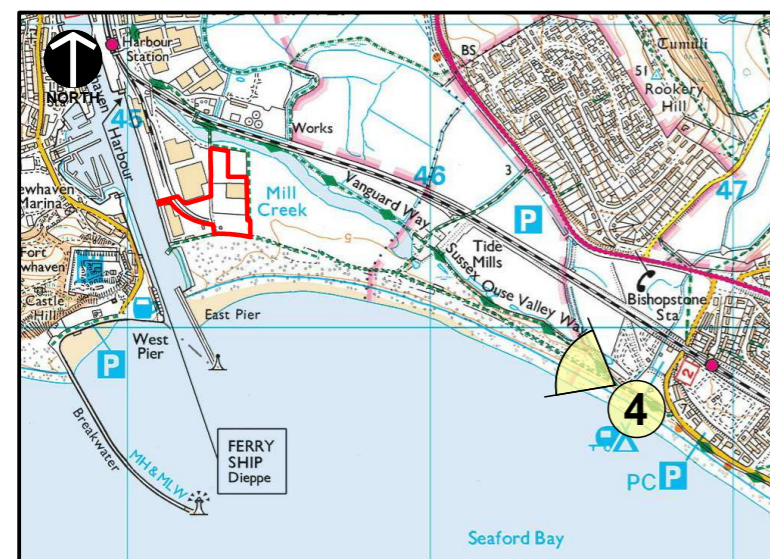


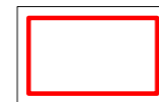


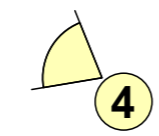
**Viewpoint Location 4: From the Sussex Ouse Valley Way**

Blank space



**Key**

 The Amended Development Site (the Site), as amended on the withdrawal of the Stage 4 development

 Viewpoint (photograph) location



Based upon the Ordnance Survey maps with the permission of the controller of Her Majesty's Stationery Office, © Crown Copyright reserved. Licence number AR100019096. OS Raster; August 2016.

Client: **Brett Group**



Project: **Landscape and Visual Impact Assessment**  
Proposed aggregate importation and processing and the preparation and manufacture of value added products Fisher's Wharf East Quay, Newhaven Port

Title: **Viewpoint Analysis, Viewpoint Location 4 From the Sussex Ouse Valley Way (Existing view)**

CAD Ref: PN1081-D6v4 (Rev A)	Version: 4	Drawn by: RB	Scale: Map 1:25,000 Print at A3	Origin Date: August 2017
------------------------------------	---------------	-----------------	---------------------------------------	-----------------------------

**bright & associates**  
landscape and environmental consultants  
Pearl Tree House Dovaston Oswestry Shropshire SY10 8DP  
01691 682 773 www.bright-associates.co.uk

Drawing:  
**Figure L-V4 (Rev A)**